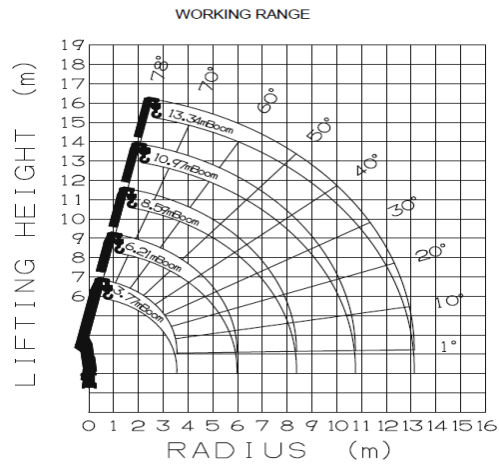
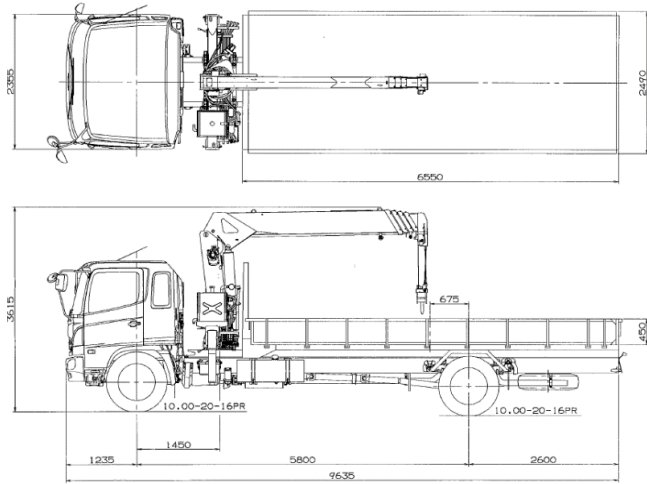


**Crane Model : TM - ZT505**  
**Chassis Model : HINO FG8JRLA**



**RATED LIFTING CAPACITIES IN KILOGRAMS**

**Crane Strength Rated Capacities**

Load Radius	3.77 M Boom	Load Radius	6.21 M Boom	Load Radius	8.59 M Boom	Load Radius	10.97 M Boom	Load Radius	13.34 M Boom
2.25 M and below	5,050	2.85 M and below	4,050	3.6 M and below	3,130	4.5 M and below	2,030	5.0 M and below	1,330
2.85 M	4,050	3.6 M	3,180	3.9 M	2,930	5.0 M	1,830	6.0 M	1,100
3.55 M	3,230	3.9 M	2,930	4.5 M	2,430	6.0 M	1,480	7.0 M	950
		4.5 M	2,430	5.0 M	2,130	7.0 M	1,230	8.0 M	830
		5.0 M	2,130	5.5 M	1,880	8.0 M	1,030	9.0 M	730
		5.5 M	1,880	6.0 M	1,650	9.0 M	880	10.0 M	650
		5.99 M	1,650	6.5 M	1,480	10.0 M	780	11.0 M	600
				7.0 M	1,350	10.75 M	730	12.0 M	550
				7.5 M	1,230			13.12 M	500
				8.37 M	1,080				

	Normal chassis		→		After crane mounting	
Body inside length	7500 mm.		Body cutting length	950 mm.	6550 mm.	
Payload capacity	8000 kg.		Reduced payload	1500 kg.	6500 kg	
Resr overhang						
	Front wheel	kg.	Rear wheel	kg.	Total	kg.
Chassis weight with cat	2765		1845		4610	
Truck bed weight	177		1088		1265	170 kg./m + 100 kg. + 50
Crane weight	1241		744		1985	C34
Crane option weight	87		353		440	
Vehicle Weight	4270		4030		8300	
Crew weight 3	172		-7		165	
Payload	756		5744		6500	
Gross Vehicl Weight	5198		9767		14965	
Permissible tire load	6000		10900		16900	Front tire 10.00 - 20 - 16 Rear tire 10.00 - 20 - 16
	2* 3000		4* 2725			
Permissible axle load	5500		11000		15000	
Load allowance	302		1133		35	
					39.7	Crane base : 125 Jack length : 620 + 65
[ NOTE ]						